



SURESEAL™

SELF-ACTIVATING
PRESSURE DRESSING

SEND PATIENTS HOME SOONER

- More time for personalized patient care
- Expands to apply pressure continuously
- Seals and isolates site securely on all sides for assurance compared to traditional gauze dressings
- Helps improve staff and unit efficiencies and economies
- Demonstrates commitment to improved patient care
- Versatile – can be used in all venous and arterial dialysis and blood sampling sites
- Can save on material costs
- More effective alternative to gauze dressings

Style	Bandage Size	Sponge Size	Unit Packaging	Case
SURESEAL L 85100 	1 X 2¾" (25mm x 72mm)	½ X ⅝" (12mm x 15mm)	100 Pieces per Box	2000 Pieces/ 20 Boxes
SURESEAL XL 85200 	1¼ X 2¾" (30mm x 72mm)	⅝ X ¾" (15mm x 20mm)	100 Pieces per Box	2000 Pieces/ 20 Boxes

SURESEAL™

SELF-ACTIVATING
PRESSURE DRESSING

GETS YOUR DIALYSIS PATIENTS

FROM
HERE

TO
HERE...



SOONER.



Driving Ideas to Market...At the Speed of InnovationSM

SURESEAL™

SELF-ACTIVATING
PRESSURE DRESSING

THE COMPACT PRESSURE DRESSING THAT GETS YOUR PATIENTS HOME SOONER

MORE TIME FOR PATIENT CARE

- Fast, positive-acting post-dialysis wound dressing allows patients to ambulate in less time than traditional tape-and-gauze bandages
- **SURESEAL can reduce nurse or technician direct pressure time by up to 44% over standard methods**
- Patients can leave your clinic sooner, comfortably*

EXPANDS TO APPLY PRESSURE

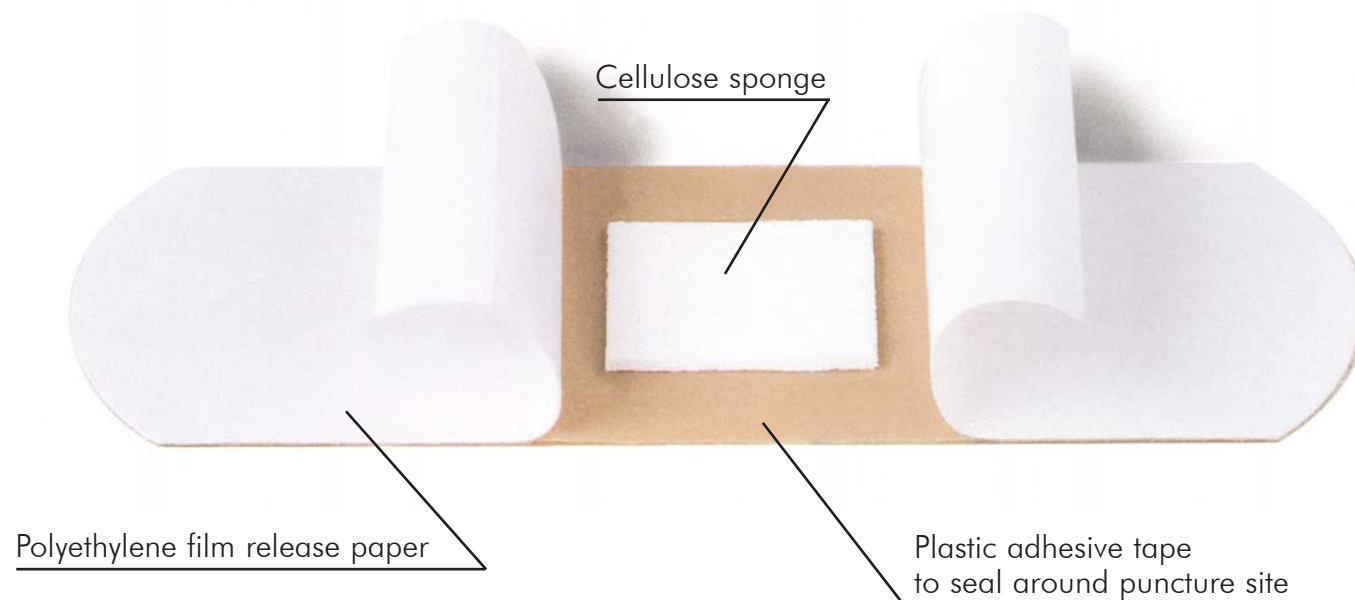
- SURESEAL cellulose pad expands on contact with blood to several times its original size

- Adhesive strip securely seals the pad on all four sides to help protect the site from leakage
- As pad continues to expand, dressing creates and sustains the direct pressure to help reduce clotting time

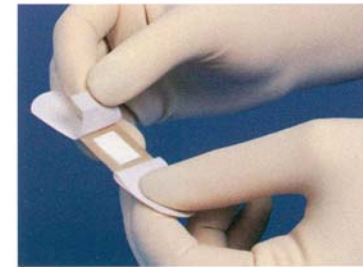
PATIENT-SENSITIVE, COST-EFFECTIVE

- SURESEAL helps reduce chair-time, material costs, and staff hands-on monitoring
- Helps improve staff and unit efficiency*
- Patients who have used SURESEAL prefer it over traditional tape-and-gauze dressings*

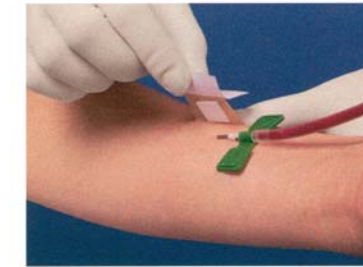
Get your patients home sooner with SURESEAL.



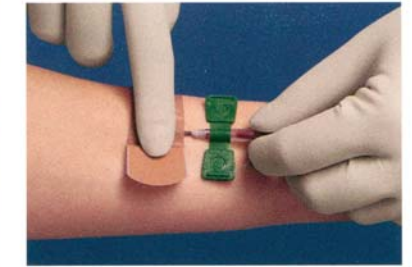
EASY, SAFE, AND EFFECTIVE TO USE



1. Before removing needle, the healthcare practitioner should peel off one of the two release papers from the adhesive portion of the SURESEAL Pressure Dressing.



2. The puncture/graft site should be covered with the cellulose sponge portion of the SURESEAL Pressure Dressing, securing the first side of exposed adhesive to the skin next to the site.



3. The healthcare practitioner should remove the needle while at the same time covering the puncture site with the cellulose sponge portion of the SURESEAL Pressure Dressing. Be careful not to put too much pressure on the site while the needle is still inserted as this may cause the graft to be punctured or damaged by the needle.



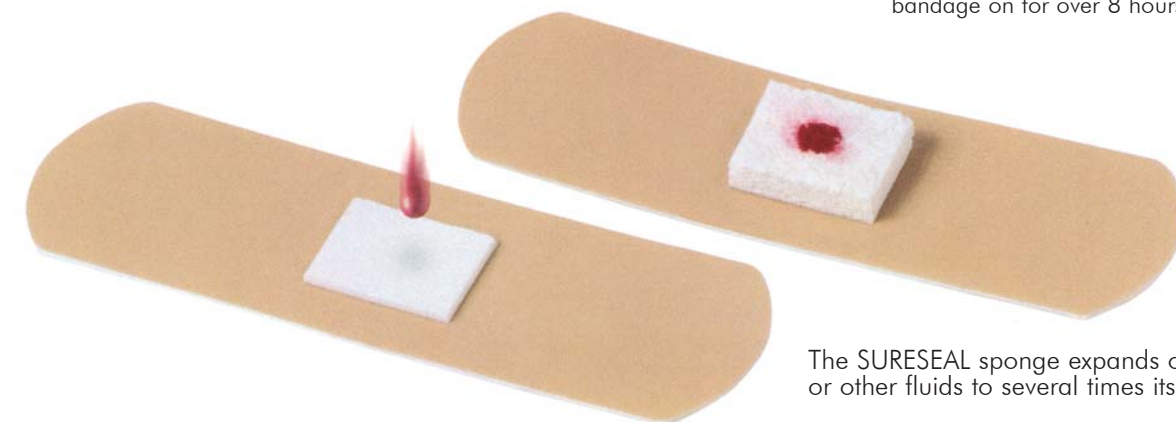
4. Once the needle is removed, the healthcare practitioner should immediately apply direct downward digital pressure to the cellulose sponge while removing the second peel-off release paper. The second adhesive portion of the dressing should be firmly attached to the skin.



5. All sides surrounding the cellulose sponge should be smoothed down to help ensure complete sealing around the puncture site.



6. The healthcare practitioner should continue to apply steady digital pressure to the sponge for 1-2 minutes as the sponge fills and expands. The patient should then continue to apply digital pressure for an additional period of time until the healthcare practitioner is convinced that the bleeding is under control. The patient is not to leave the bandage on for over 8 hours.



The SURESEAL sponge expands on contact with blood or other fluids to several times its original size.